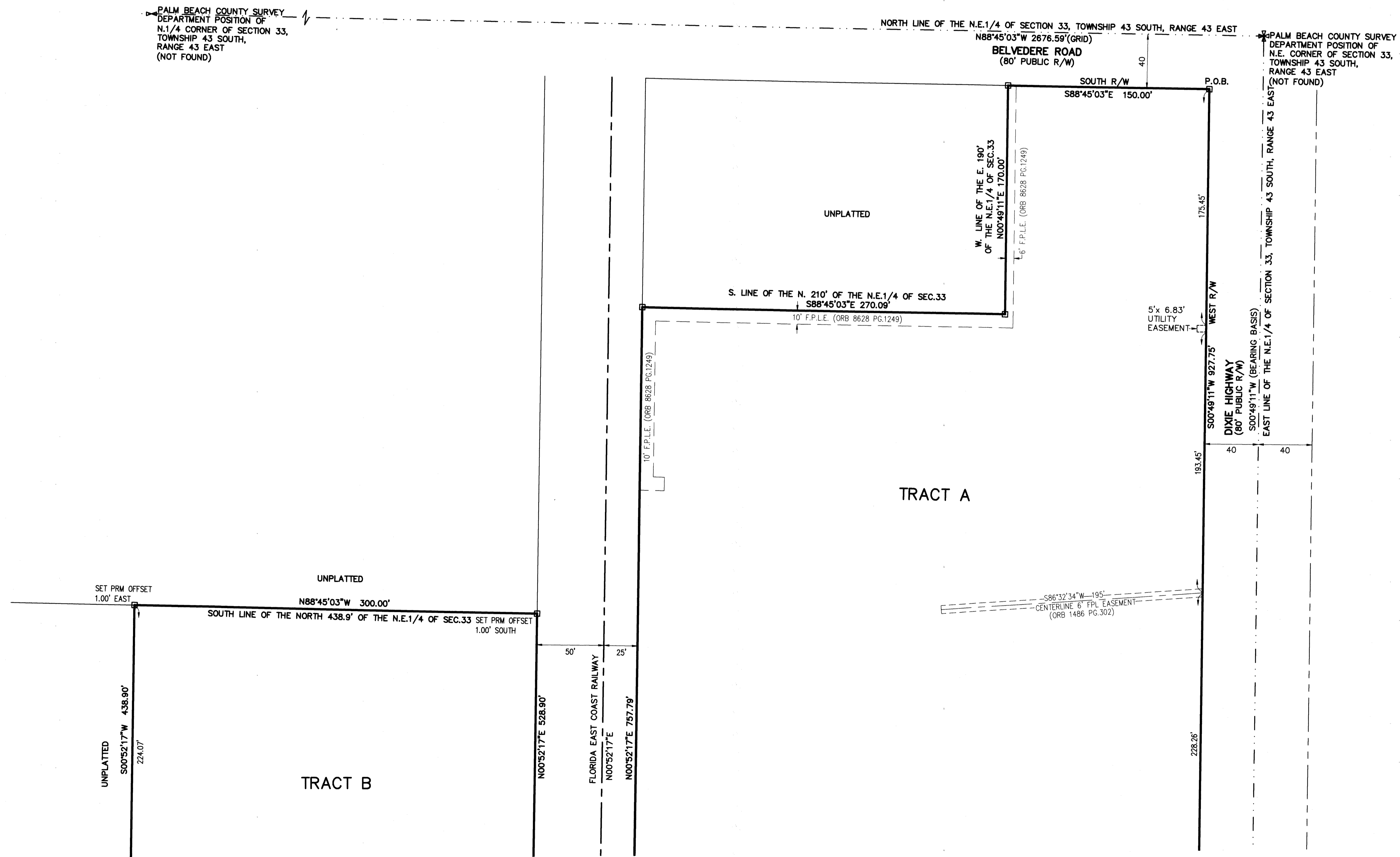


SHOPS AT THE PRESS

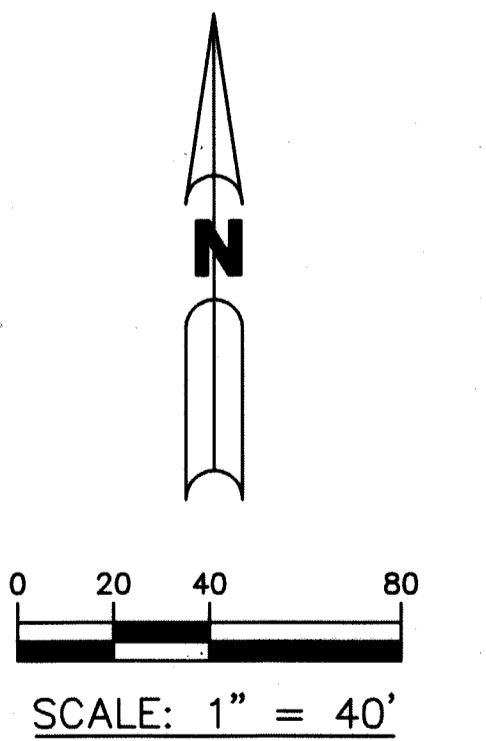
LYING IN THE NORTHEAST QUARTER OF SECTION 33, TOWNSHIP 43 SOUTH, RANGE 43 EAST,
CITY OF WEST PALM BEACH, PALM BEACH COUNTY, FLORIDA,
AND A REPLAT OF BLOCKS 5, 7, AND A PORTION OF BLOCK 9, OF MONCEAUX,
RECORDED IN PLAT BOOK 13 PAGE 72

SHEET 2 OF 3

184



- ABBREVIATIONS:**
 P.O.B. - POINT OF BEGINNING
 ORB - OFFICIAL RECORD BOOK
 D.B. - DEED BOOK
 P.B. - PLAT BOOK
 NO. - NUMBER
 PG. - PAGE
 R/W - RIGHT-OF-WAY
 SEC. - SECTION
 C - CENTERLINE
 NAD - NORTH AMERICAN DATUM
 PBC - PALM BEACH COUNTY
 WPB - WEST PALM BEACH
 LB - LICENSED BUSINESS
 33/43/43 - SECTION 33, TOWNSHIP 43 SOUTH,
 RANGE 43 EAST
 U.E. - UTILITY EASEMENT
 D.E. - DRAINAGE EASEMENT
 F.P.L.E. - FLORIDA POWER & LIGHT EASEMENT
 S.B.E. - SOUTHERN BELL EASEMENT
 S.S.E. - STORM SEWER EASEMENT
 W.M.E. - WATER MAIN EASEMENT
 LLC - LIMITED LIABILITY COMPANY
 F.E.C. - FLORIDA EAST COAST



PREPARING SURVEYOR & MAPPER'S STATEMENT
 THIS INSTRUMENT WAS PREPARED BY
 JOHN E. PHILLIPS III, P.S.M. 4826

BROWN & PHILLIPS, INC.
 CERTIFICATE OF AUTHORIZATION # LB 6473
 1860 OLD OKEECHOBEE RD., SUITE 509
 WEST PALM BEACH, FLORIDA 33409
 561-615-3988, 615-3986 FAX
 BROWN & PHILLIPS, INC. PROJECT NO.19-085

SEE SHEET 3 OF 3

D:\WP\Projects\1017\Projects\1017_Shop at the Press\1017_Shop at the Press\1017_Shop at the Press\1017_Shop at the Press.dwg, 2/20/2011 10:52:56 AM, AutoCAD 2011 (General) Document\shop3